

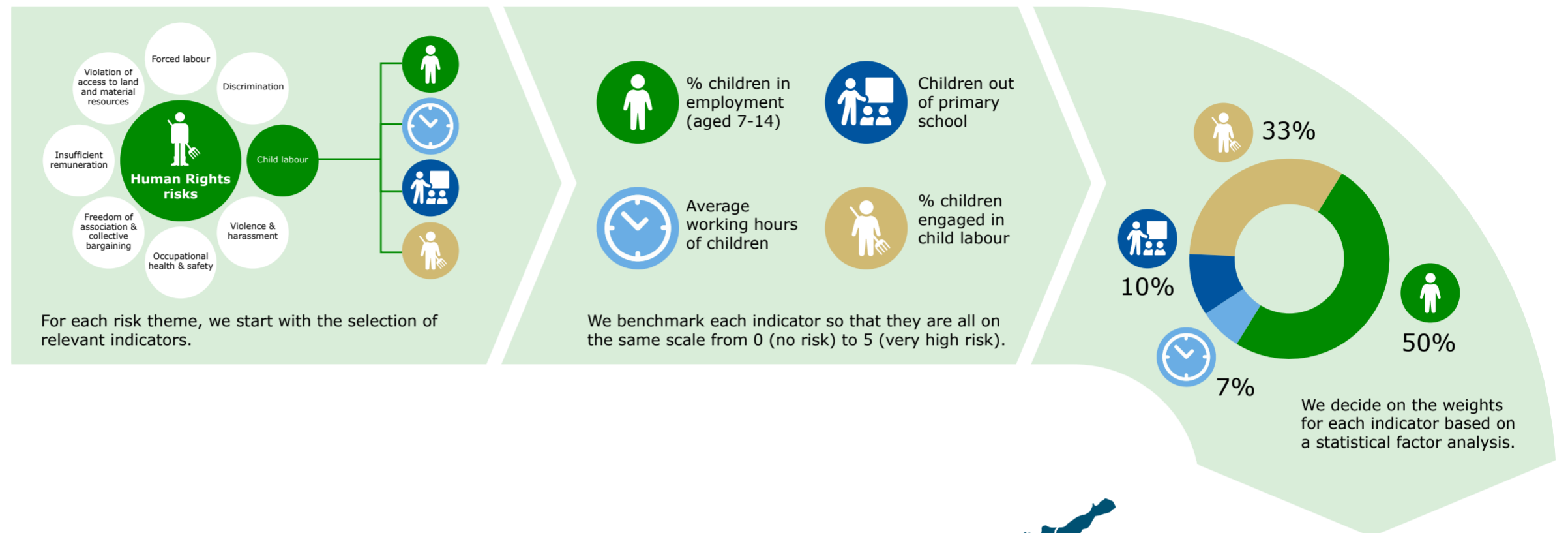
Wageningen Food Views – Due Diligence Dashboard

Human rights risk scores methodology

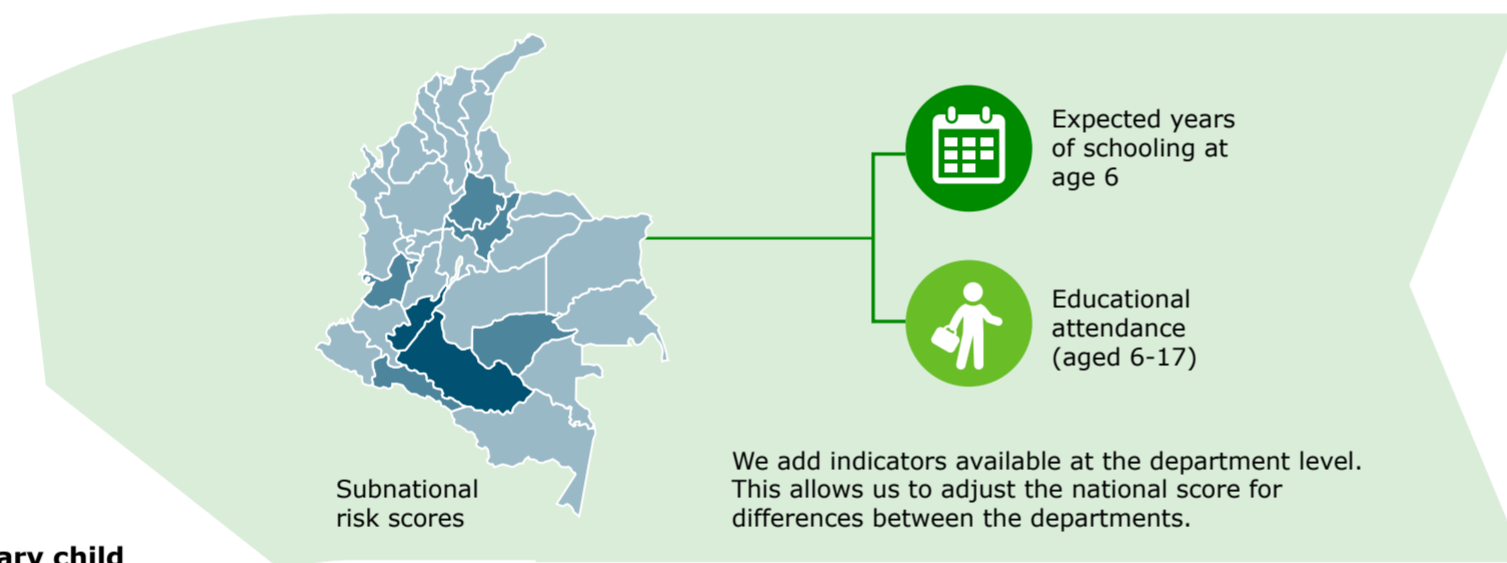
www.wageningenfoodviews.com/duediligencedashboard



Step 1: We calculate the national risk score for child labour in Colombia.



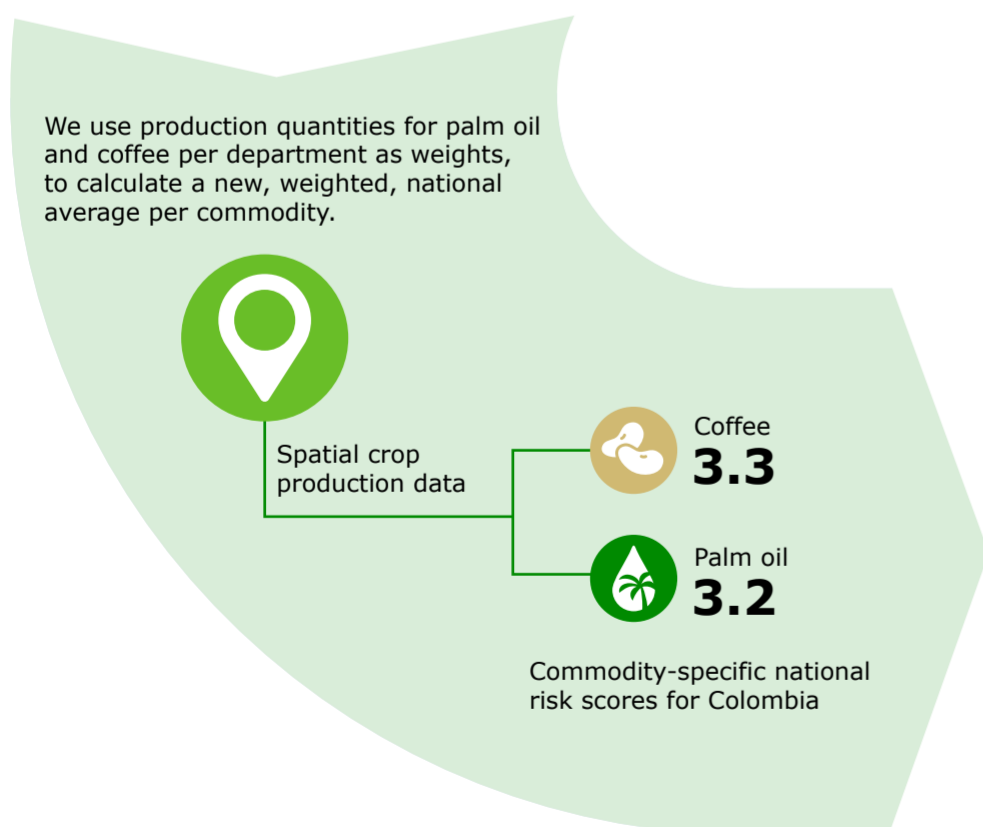
Step 2: We calculate the subnational risk scores. Each department receives its own score.



National risk score for child labour in Colombia:
3.3

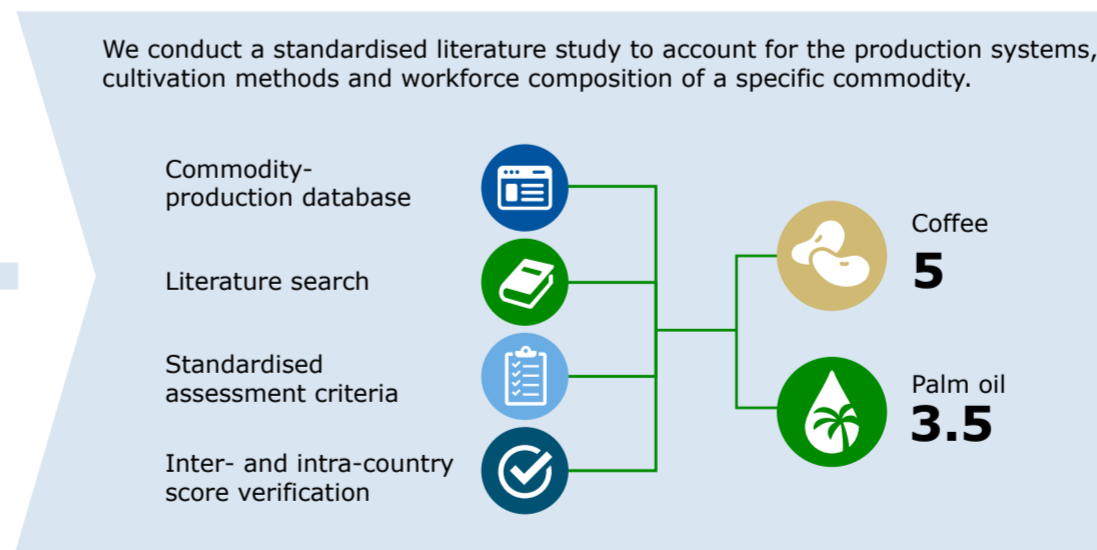
Step 3: We calculate a preliminary child labour risk score specifically for coffee and palm oil in Colombia.

We use production quantities for palm oil and coffee per department as weights, to calculate a new, weighted, national average per commodity.

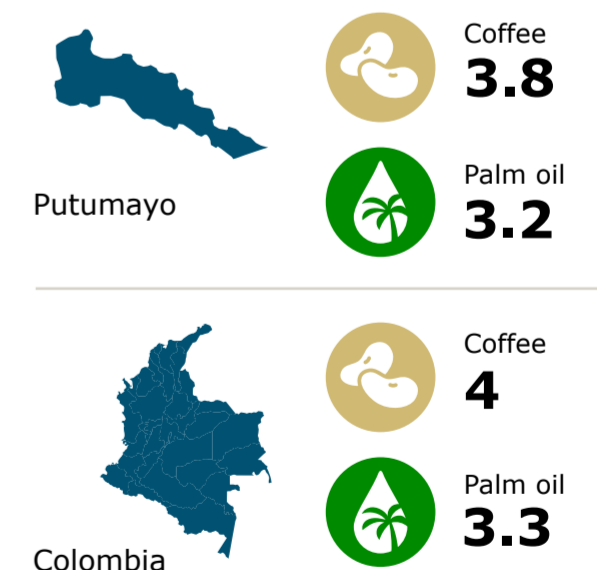


Step 4: We determine the final national and subnational risk scores for coffee and palm oil through qualitative research.

We conduct a standardised literature study to account for the production systems, cultivation methods and workforce composition of a specific commodity.



Final risk scores for child labour



The average final risk score for child labour in the **coffee** sector is 4.1. The range of the final risk scores is 3.2-4.9. Based on 20 final risk scores (batch 2023/2024).

The average final risk score for child labour in the **palm oil** sector is 3.9. The range of the final risk scores is 2.8-4.8. Based on 13 final risk scores (batch 2023/2024).

These risk scores are based on the input from the following sources: *Global Data Lab, Unicef, World Bank, complemented by a standardised literature study.*